



**Plastindustrien Klimadata som
konkurrencefordel
– brugbare indsigter til klimaregnskabet
med AI**

No more guesswork and manuel work

De dårlige nyheder først...

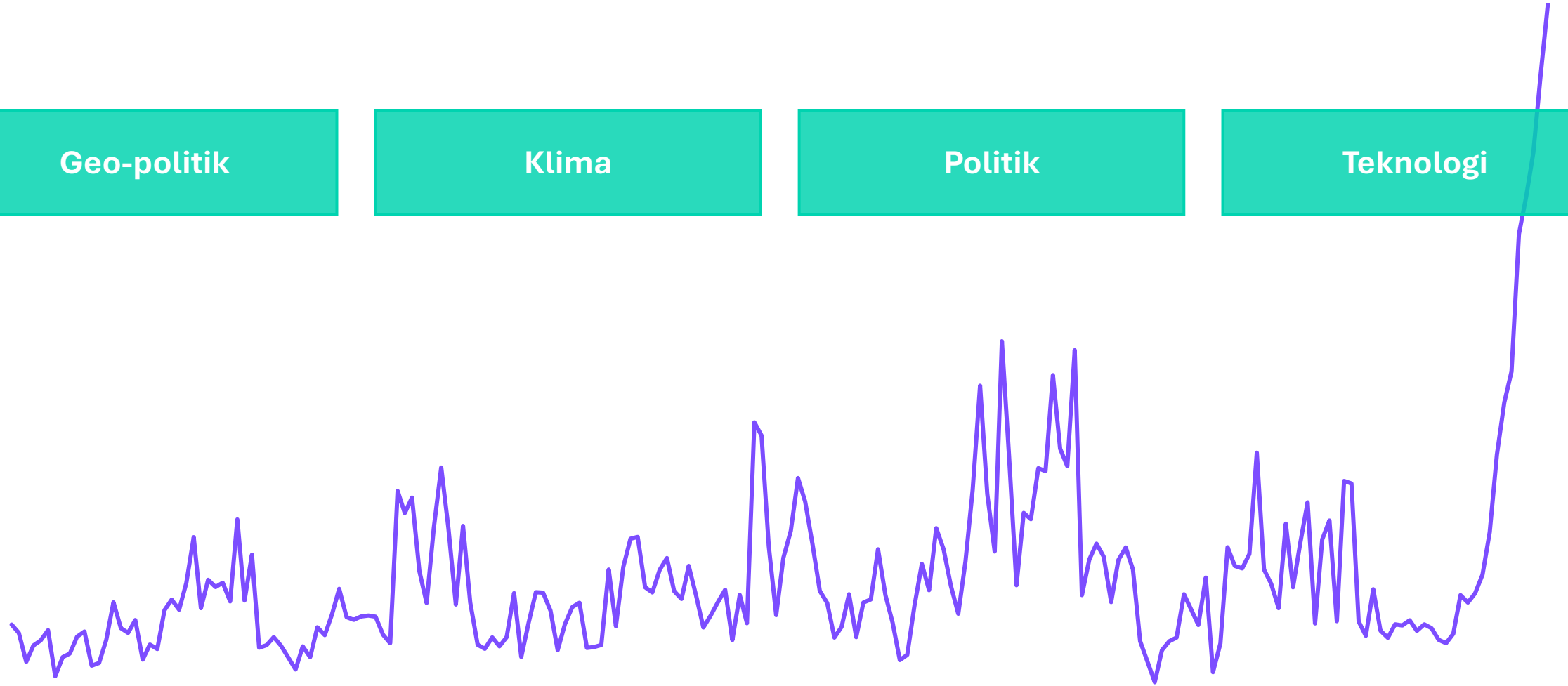
Usikkerhed er the “new normal”

Geo-politik

Klima

Politik

Teknologi



Er klimakrisen afblæst?

Risk categories

- Economic
- Environmental
- Geopolitical
- Societal
- Technological

2 years

1 st	Misinformation and disinformation
2 nd	Extreme weather events
3 rd	State-based armed conflict
4 th	Societal polarization
5 th	Cyber espionage and warfare
6 th	Pollution
7 th	Inequality
8 th	Involuntary migration or displacement
9 th	Geoeconomic confrontation
10 th	Erosion of human rights and/or civic freedoms

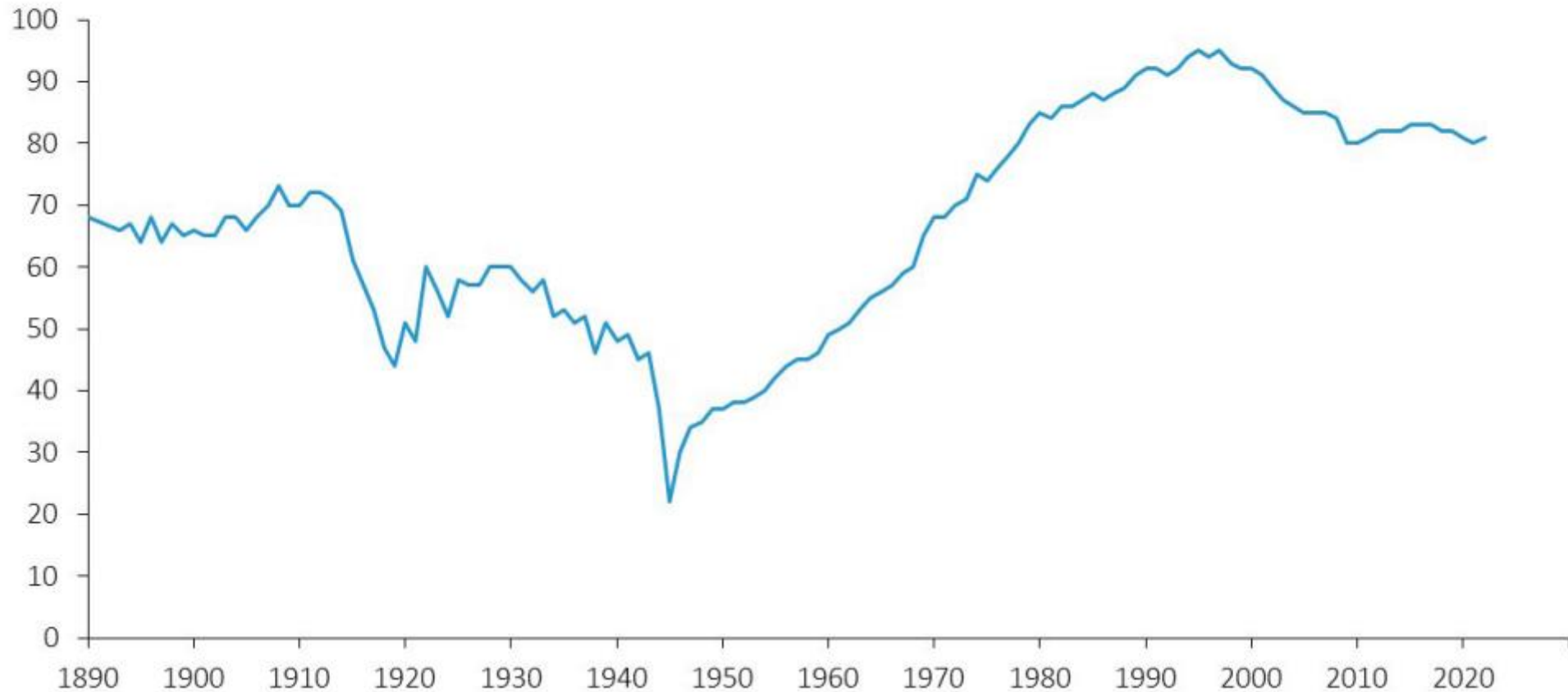
10 years

1 st	Extreme weather events
2 nd	Biodiversity loss and ecosystem collapse
3 rd	Critical change to Earth systems
4 th	Natural resource shortages
5 th	Misinformation and disinformation
6 th	Adverse outcomes of AI technologies
7 th	Inequality
8 th	Societal polarization
9 th	Cyber espionage and warfare
10 th	Pollution

Vores konkurrenceevne er stagneret

EU versus US labour productivity 1890-2022

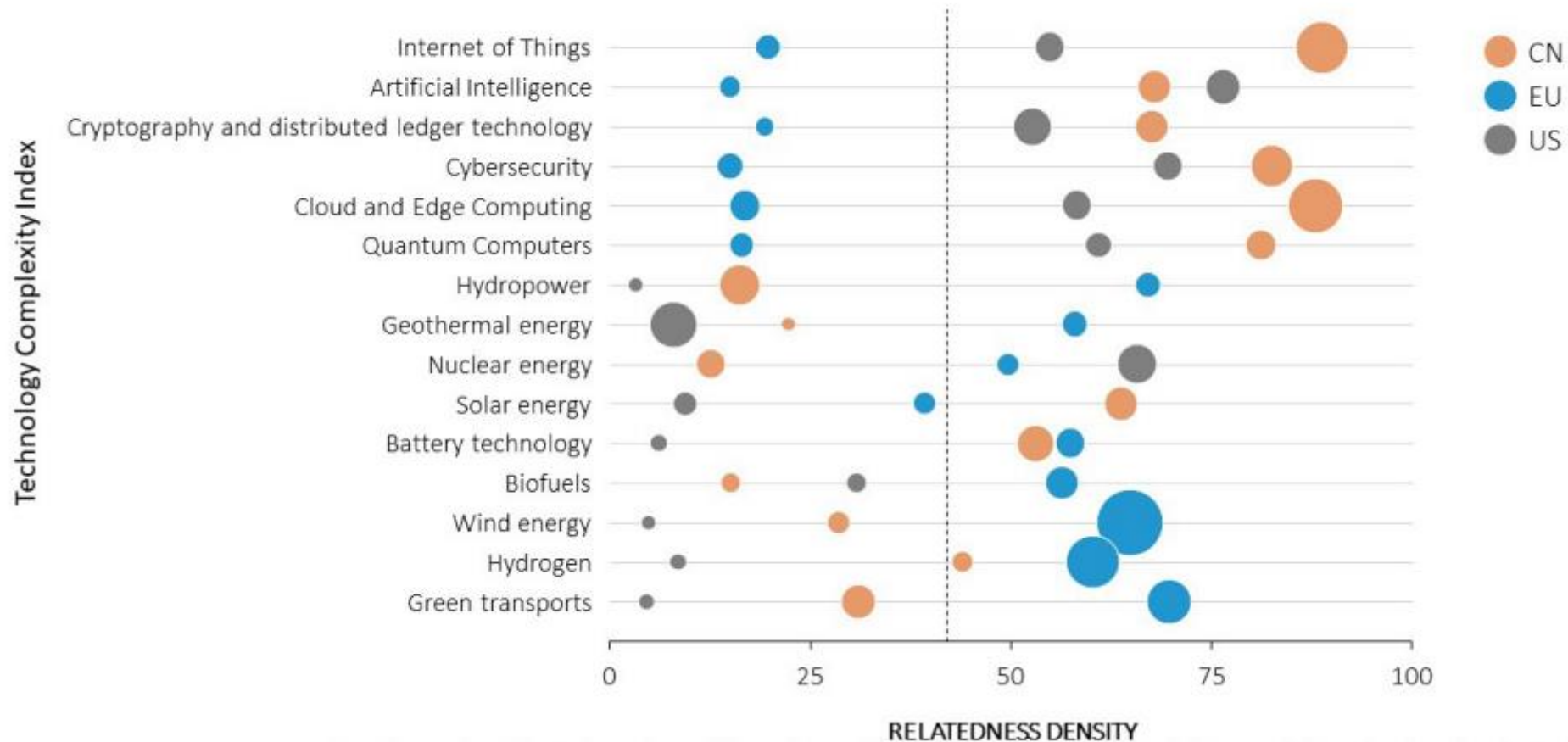
Index (US=100)



Er vi morgendagens vindere?

The EU's position in complex (digital and green) technologies

2019-2022



Tilgængæld kan vi regulere...

50.000 virksomheder + 1,5 m

12 standarder og 85 rapporteringskrav

500 KPI'er

10.000 datapunkter

AI og klimadata som en konkurrencefordel

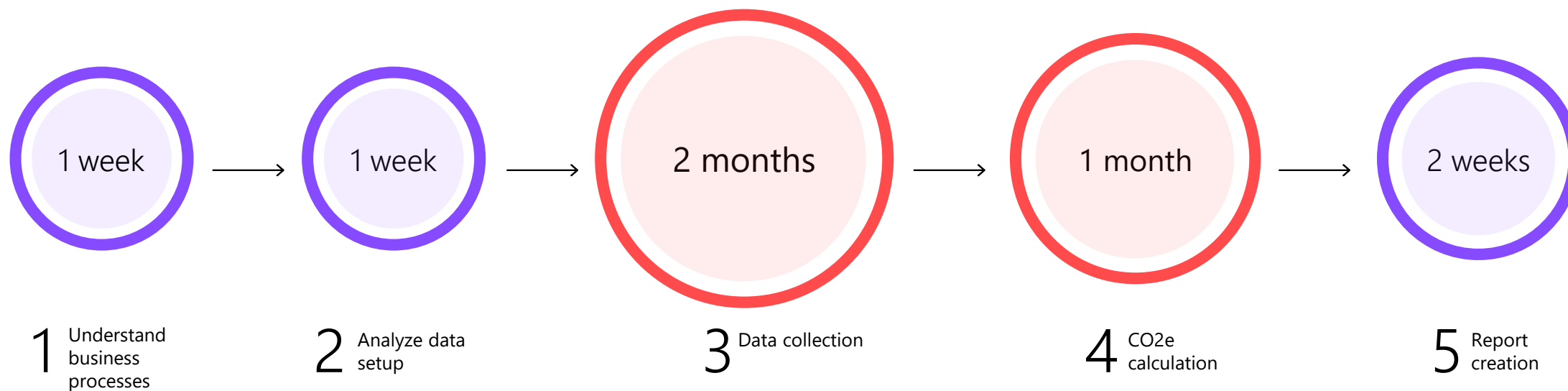
Klimadata er ikke længere kun compliance, det kan blive en konkurrencefordel

Regulering

Kundekrav

Innovation

**Fragmenterede data i ERP, regnskab, produktion, leverandørkæde
Håndholdte Excel-ark → langsomme, fejlbehæftede processer.
Klimaregnskab som årlig øvelse fremfor løbende styring.**



Vision

AI is disrupting every SaaS workflow. We are creating a AI Value Chain Agent by applying AI to deep ERP integration

Reactive → Proactive:

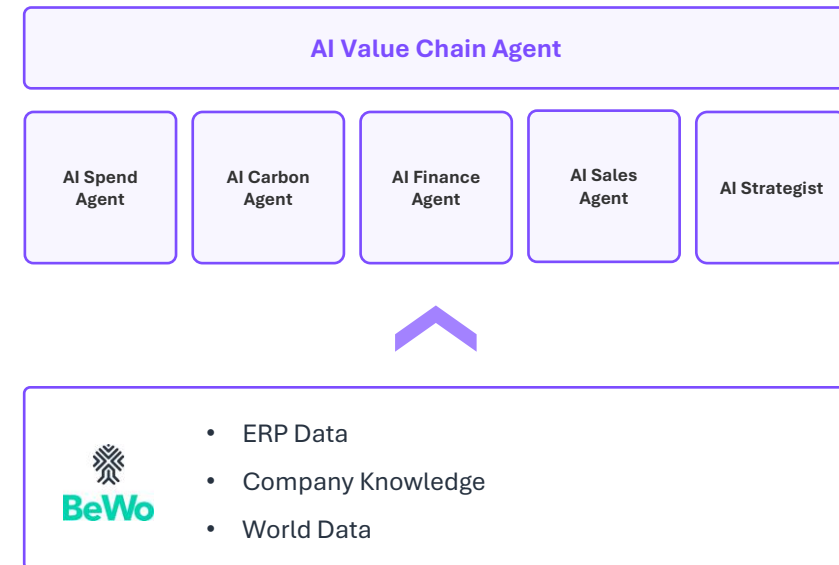
Act in real-time, not on old reports

Siloed data → Shared knowledge:

Knowledge is centralized and actionable.

Individual skill → Strong teams:

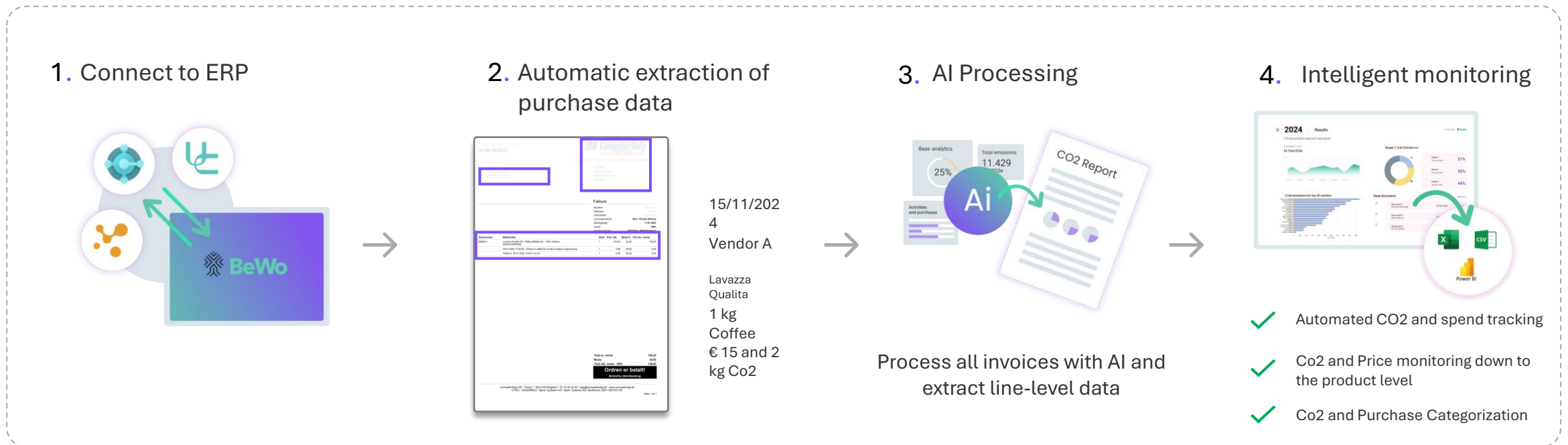
AI captures and shares expertise



Imagine having a colleague who knows everything about your companies' sustainability, procurement, finance, sales & marketing

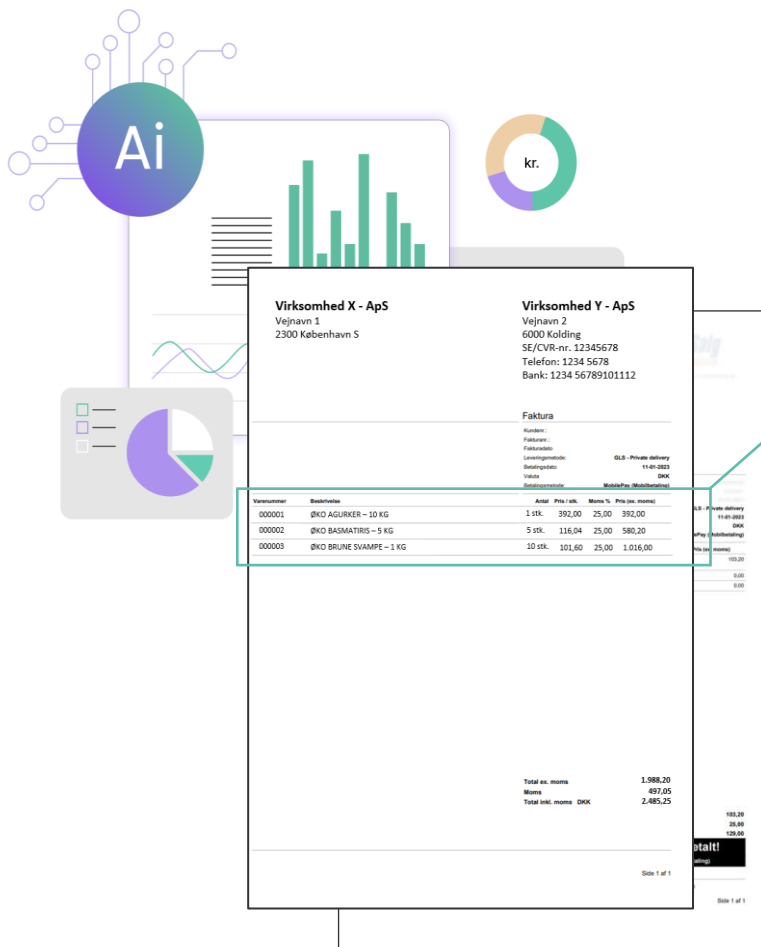
Solution

BeWo help companies by efficiently giving them actionable data insights to optimize both spend and CO2e by integrating to their ERP systems



By integrating to ERP systems and applying our AI engine we significantly reduce the complexity for our customers enabling them to focus on delivering results and change!

Our AI provides carbon and spend visibility down to the product level



AI Scanned Data:

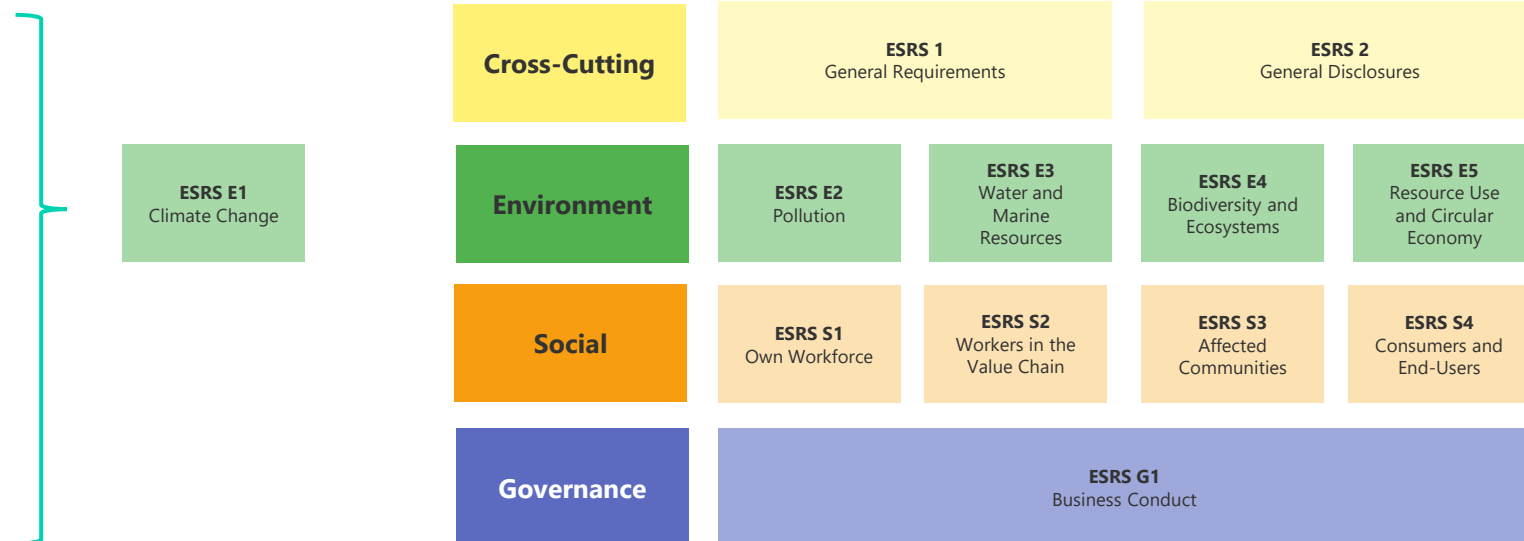
- Item number
- Product/Service name
- Quantity (pcs, boxes etc.)
- Amount (kg, liter etc.)
- Price/quantity
- Total price
- Vendor name
- Date

- ✓ Co2 and Price development over time
- ✓ Monitoring of product categories
- ✓ Check Co2 and price changes on product level
- ✓ Track purchases across suppliers and companies
- ✓ Benchmarking supplier prices and Co2 emissions

Reporting

Climate Change

Total Energy Consumption MWh	ESRS E1-5
Energy intensity	ESRS E1-5
• MWh / Net Revenue	
Scope 1 GHG emissions	ESRS E1-6
Scope 2 GHG emissions	ESRS E1-6
Scope 3 GHG emissions	ESRS E1-6
Total GHG emissions	ESRS E1-6
GHG intensity	ESRS E1-6
• Total GHG emissions / Net Revenue	



Our output is aligned with ESRS E1 from CSRD

Which spend category was the largest source of CO2 emissions in the first quarter of this year? Show me the top 5 categories as a bar chart.

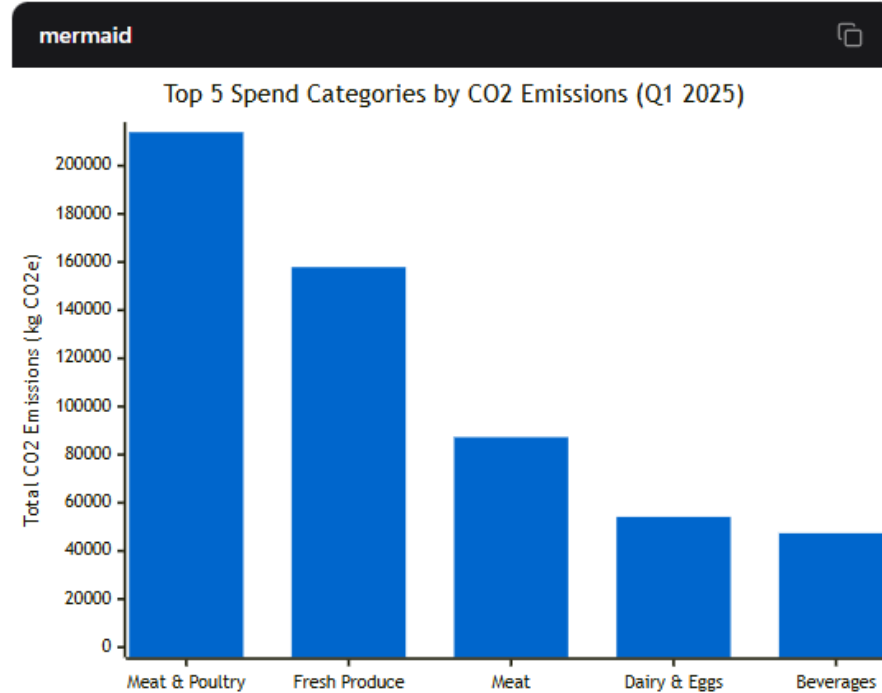
✓ Used tool: **runSqlQuery**

✓ Used tool: **generateXYChart**

The largest source of CO2 emissions in the first quarter of 2025 was the "Meat & Poultry" spend category. Here are the top 5 categories by total CO2 emissions (in kg CO2e):

Rank	Spend Category	Total CO2 Emissions (kg CO2e)
1	Meat & Poultry	213,925.05
2	Fresh Produce	157,876.14
3	Meat	87,242.63
4	Dairy & Eggs	54,144.06
5	Beverages	47,362.95

Below is a bar chart visualizing these results:



Key insight: Meat & Poultry is the dominant contributor to CO2 emissions, significantly exceeding other categories. This suggests a major opportunity for sustainability improvements by targeting procurement practices in this area. If you would like a breakdown by sub-category or vendor, or want to explore cost-saving opportunities alongside CO2 reduction, let me know!

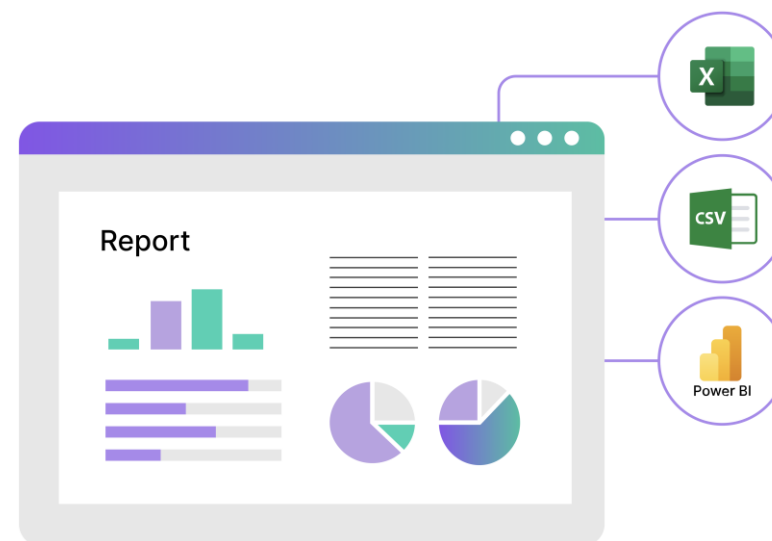
Continue Your Analysis

Explore deeper insights into CO2 emissions and spend categories for Q1 2025.

Key Benefits

Let our AI Transform Your Data into Value for your Business and let you focus on delivering results rather than collecting data!

- ✔ **Eliminate Manual Work**
Free up sustainability, finance and procurement teams
- ✔ **One source of truth and auditability**
Get rid of excel sheets that are depend on individual colleagues
- ✔ **You don't have to be an expert in carbon accounting**
Our platform follows the standards for calculating Co2 and is continually updated with emissions factors
- ✔ **Deep data insights**
Instant comparability and reporting



Compliance



Process innovation

Produktinnovation

Værdikædeoptimering

Produktivitet

Datadrevet værdiskabelse

Tak for jeres tid!