

Nordic Bioplastic Conference 2024
11th of April 2024



VELUX needs and perspectives on mass balance

Championing change and the sustainable transformation of the built environment

37%

of global CO₂ emissions stem from the building industry

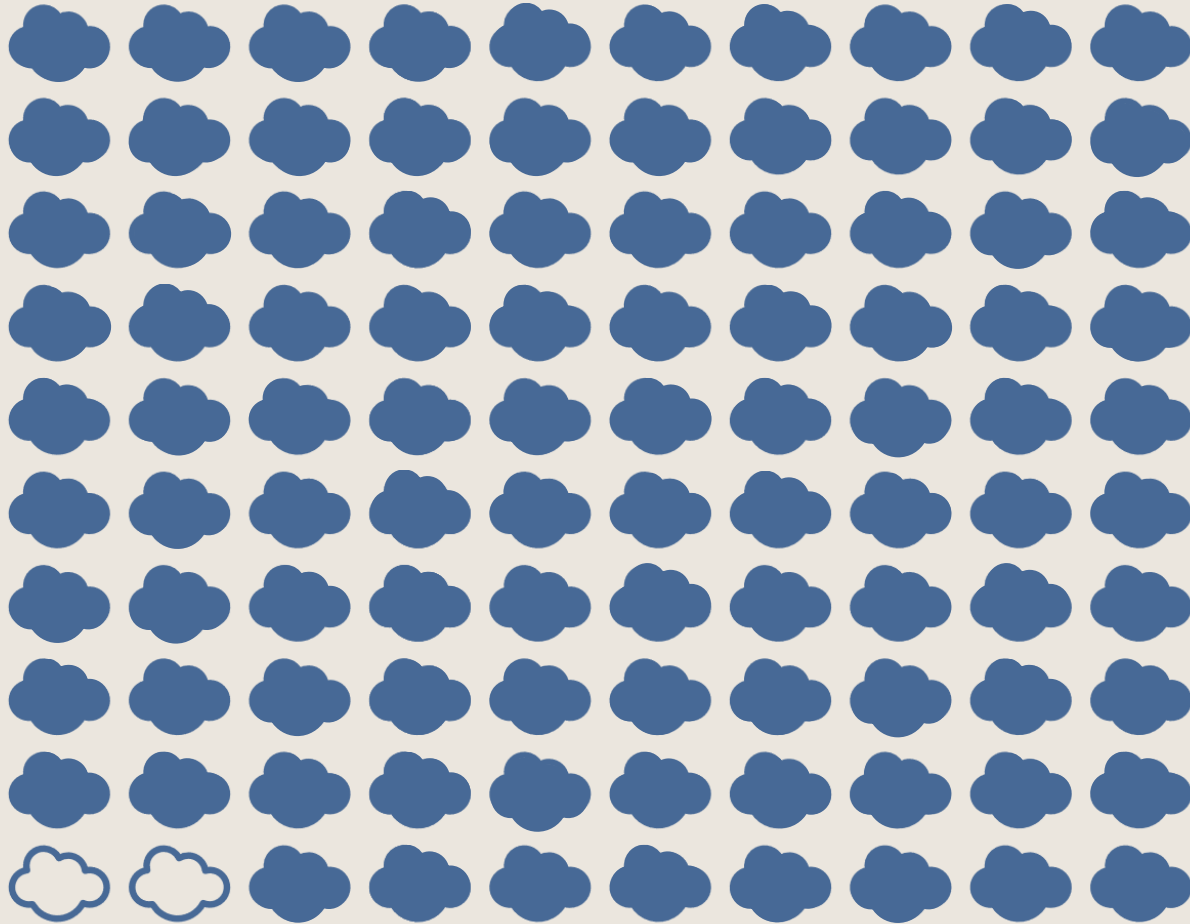
1 in 3

Europeans today live with a poor indoor climate

We urgently need sustainable buildings which are energy efficient, low carbon and support people's health and well-being. We want to create awareness of the impact of daylight and fresh air in creating well-being for people and planet. And in doing so, set new standards for sustainable business in our industry.

Our sustainable strategy





Carbon footprint



Own operations

Value chain

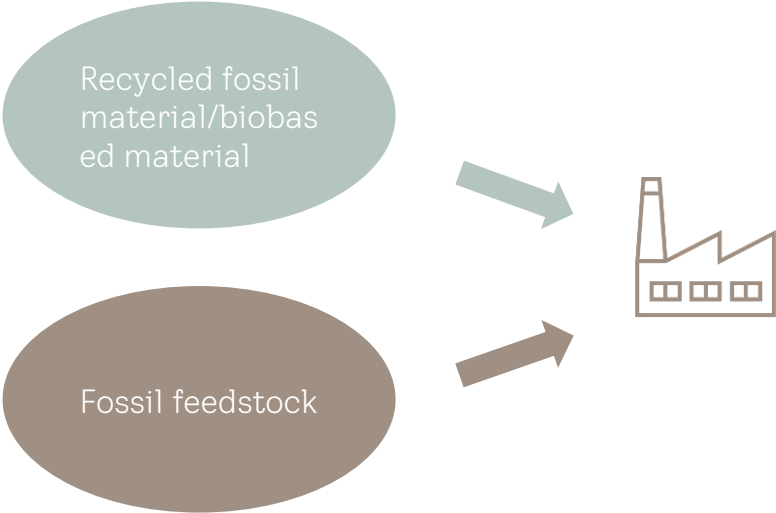
1.5%

98.5%

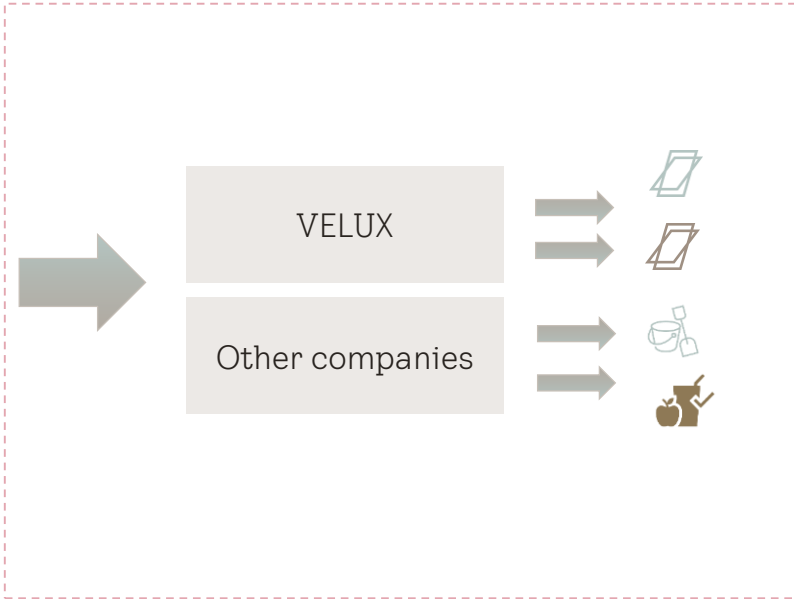
Mass balance



Mixing of fossil and recycled feedstock from e.g., plastic waste yields or renewable feedstock with fossil feedstock into a new product.

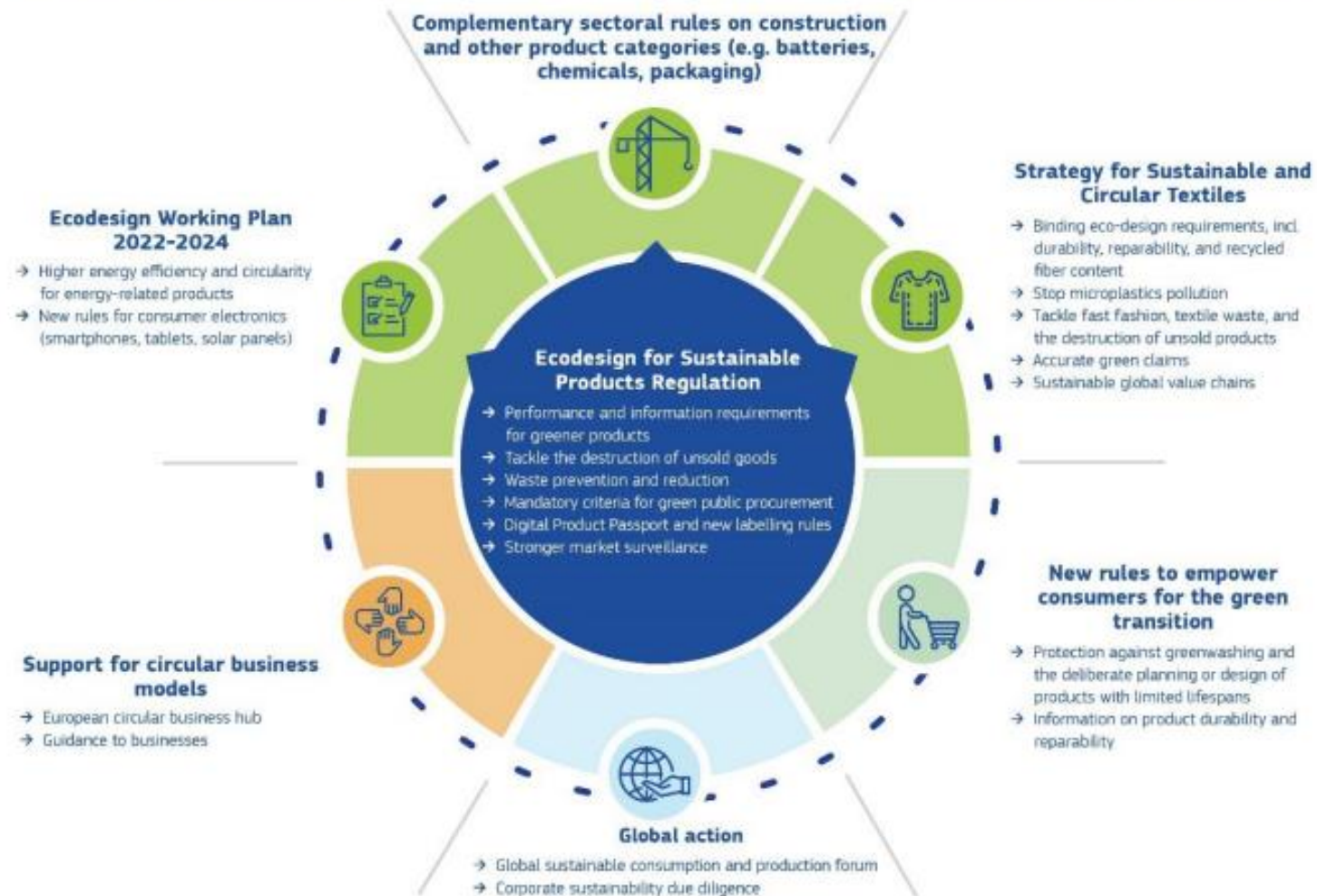


'Chain of custody' process by which inputs and outputs and associated information are transferred, monitored and controlled as they move through each step in the relevant supply chain.



EU Regulatory Framework

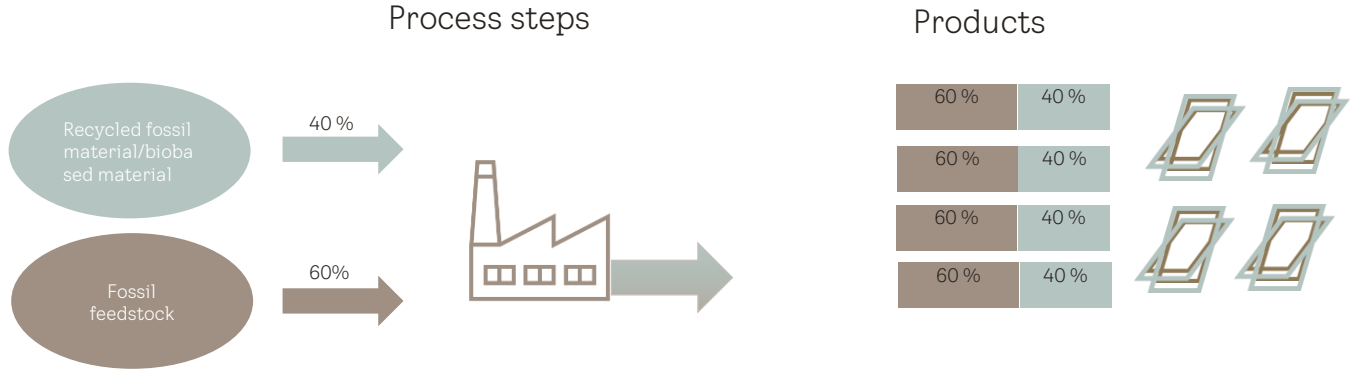
Making sustainable products the norm in a more resilient Single Market



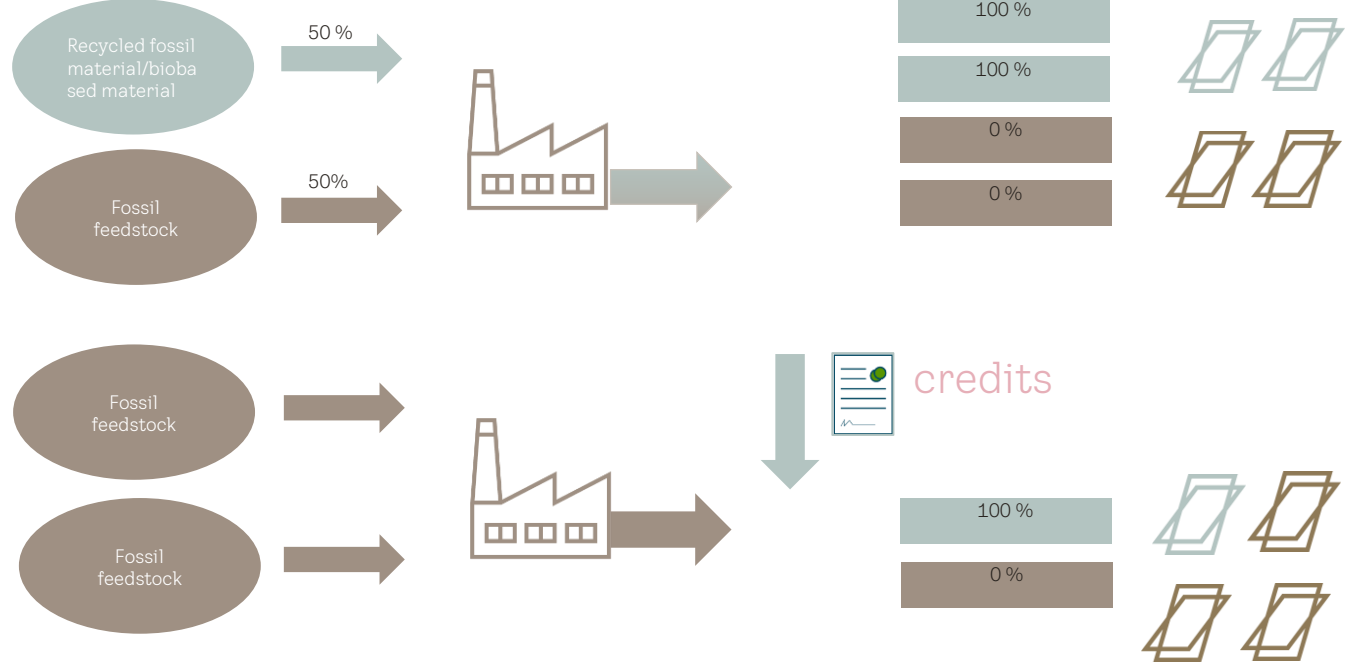
Mass balance

Strict approach
↑
↓
Flexible approach

Rolling average/
proportional
allocation



Credit transfer



Defining parameters
for mass balance
approach/model

- Batch level
- Process level
- Plant level
- Site level
- Multisite
- Geography/system credit boundary
- Attribution rules
- Chemical connectivity
- Technical feasibility
- Etc.

Contact info